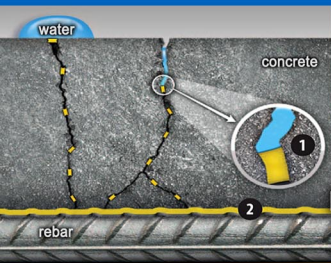


WATER SHIELD™

Integral Concrete Waterproofing



WaterShield Integral Concrete Waterproofing is an integral powdered waterproofing admixture used for waterproofing concrete and cement plasters. It makes concrete cohesive, reduces porosity and improves water tightness. (Does not contain extenders)



1. Hydrophobic pore blocking 2. Corrosion-inhibiting surface coating



AREAS OF APPLICATION

- Roof slabs and screeds
- External plastering
- Bathrooms
- Balconies
- Concrete gutters
- Basement
- other water retaining structures



Features

Waterproof

An effective hydrophobic pore filler, blocks pores in the concrete. The absorption of water in the concrete is dramatically reduced. Water stays out of the concrete.

WaterShield does not absorb water.



Corrosion Inhibitor

Ionic in nature, the molecules in WaterShield also binds to the surface of any steel reinforcement in the concrete, forming passivating layers and minimizing rebar corrosion. Chloride free formulation.

Efflorescence Inhibitor

Reduced porosity, hence blocks the formation of ugly efflorescence in concrete.

Consistency

Makes the mix cohesive and denser, hence the concrete and plaster has reduced permeability.

Economics

Most economical waterproofing additive, reduces water absorption.

Setting & strength

Does not affect the setting time and strength of the cured concrete.

Compatibility – Compatible with most types and grades of cements.

WATER SHIELD

Integral Concrete Waterproofing

Application

For Normal Waterproofing – add one bag (1000grams total) WaterShield to one bag (40kgs.) cement in your concrete mix.

For Superior Waterproofing – add two bags (2000grams total) up to four bags (4000grams total) WaterShield to one bag (40kgs.) cement in your concrete mix.



 **CAMPBRIDGE**
PAINTS
The Waterproofing Company

29-D GENERAL TIRONA STREET, CALOOCAN CITY, PHILIPPINES
TEL NO. 8252-0531 (connecting all departments)
www.campbridge.com • email: campbridge@campbridge.com

DISCLAIMER The product information and application details given by the company and its agents has been provided in good faith and meant to serve only as a general guideline during usage. Users are advised to carry out tests and take trials to ensure on the suitability of products meeting their requirement prior to full scale usage of our products. Since the correct identification of the problems, quality of other materials used and the on-site workmanship are factors beyond our control, there are no expressed or implied guarantee/warranty as to the results obtained. The company does not assume any liability or consequential damage for unsatisfactory results, arising from the use of our products.